

**NOAA  
FISHERIES**

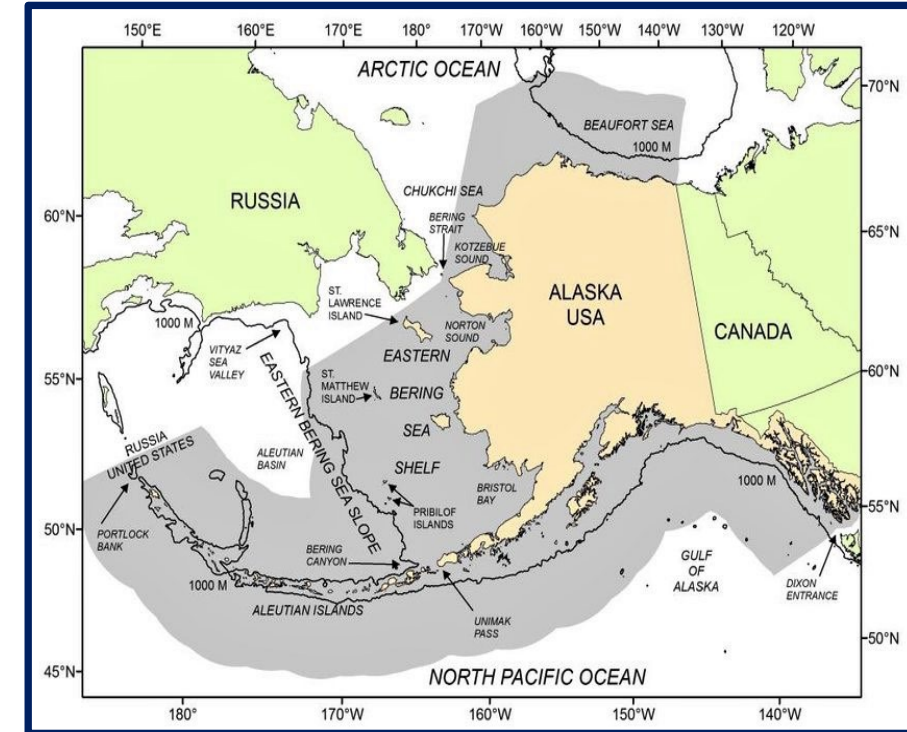
# Implementing EM Alongside an At-Sea Observer Program

North Pacific Observer Program  
Alaska Fisheries Science Center  
Fisheries Monitoring and Analysis Division



# North Pacific Electronic Monitoring (EM)

- EM Option required in 2013 Annual Deployment Plan after program restructuring.
- Full Coverage Sector
- Partial Coverage Sector
- Industry requests Exempted Fishing Permit (EFP) to field test potential regulations.



# Total Trips by Sector

Sector	Trips	Monitored Trips
Trawl – Full Coverage	1,849	1,849
Trawl (EM) – Full Coverage	999	999
Trawl – Partial Coverage	638	145
Trawl (EM) – Partial Coverage	432	142
Fixed Gear – Partial Coverage	2,258	356
Fixed Gear (EM) – Partial Coverage	923	256

# Electronic Monitoring (EM) Process

- Trips are logged in the Observer Declare and Deploy System (ODDS)
- Annual opt in / out period from Sep 1. to Nov. 1
- Once opted in, fixed gear and Alaska Pollock pelagic trawl trips must be EM for the calendar year
- Footage is reviewed by the Pacific States Marine Fisheries Commission and Saltwater Inc.
- Feedback is generated on a trip by trip basis



# Fixed Gear EM Program

- EFP began in 2013
- Longline entered regulatory status in 2017, pot in 2018
- As of 2023 there are 179 vessels participating
- Gear Types: Longline, Traditional Pot, Slinky Pot



# Fixed Gear Anticipated 2023 Coverage Rates

- No Selection – 0%
- Hook-and-Line – 18%
- Pot (Traditional / Slinky) – 17%
- Electronic Monitoring – 30%





# Trawl EM (Non-Regulatory)

- Non-Regulatory; Began in 2018
- Regulatory status anticipated in 2025
- As of 2023 there are 79 vessels participating
- EM System records for the entire trip for discard documentation compliance
- Observers at shoreside plants



# Trawl Anticipated 2023 Coverage Rates

Area	Electronic Monitoring (% Monitored)	At-Sea Observer Program (% Monitored)
Bering Sea / Aleutian Islands (BSAI)	100%	100%
Gulf of Alaska (GOA)	33%	23%





# Shoreside EM Observers

- Monitor 100% BSAI Pollock Offloads (All trips) for salmon
- Monitor 33% GOA Pollock Offloads for salmon
- Collect specimens to account that would be collected by At-Sea Observers.



# Bering Sea Shoreside Biological Specimens

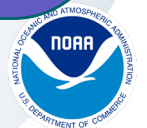
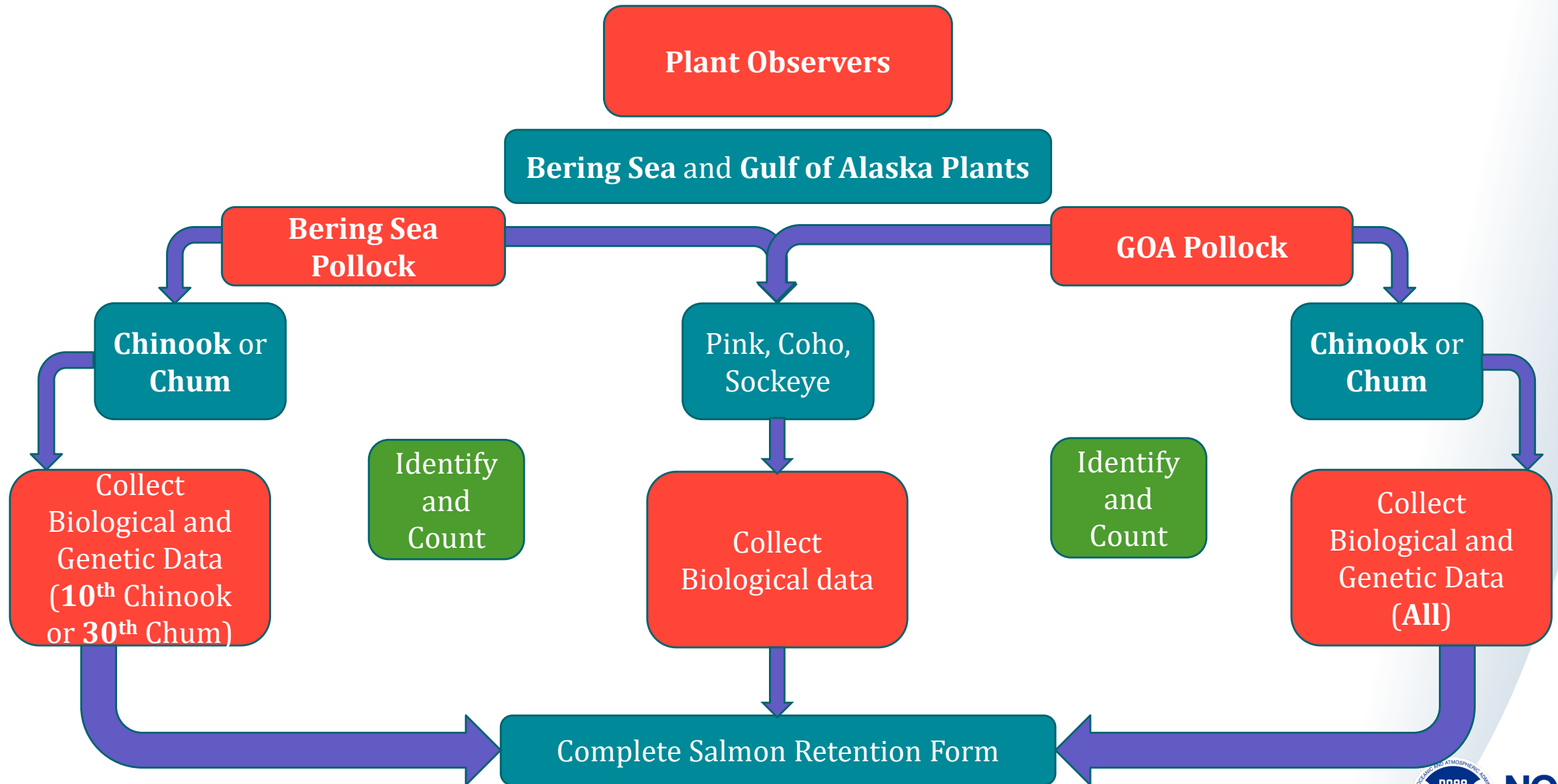
Bering Sea Pollock	At-Sea Observer Hauls	Shoreside EM Offloads
Sex / Lengths (Pollock)	~ 20 (Every Haul)	~ 100 (Every Offload)
Associated Weights (Pollock)	~ 10 (Random 5 <sup>th</sup> Haul)	~ 10 (Every)
Otolith Pairs (Pollock)	2 (5 <sup>th</sup> )	2 (Every)
Unsexed Lengths (Squid)	~ 20 (Every)	~ 100 (Every)
Lengths (Rougheye Rockfish)	~ 5 (Every)	~ 25 (Every)
Otolith Pairs (Rougheye Rockfish)	5 (Every)	25 (Every)
Lengths (Sablefish / Black Cod)	~ 5 (Every)	25 (Every)
Pacific Halibut Condition	~ 10 Viability Assessments (Every)	Measure and Assess All Halibut

# Gulf of Alaska Shoreside Biological Specimens

Gulf of Alaska Pollock	At-Sea Observer Hauls	Shoreside EM Offloads
Sex / Lengths (Pollock)	~ 50 (Every Haul)	~ 150 (Every Offload)
Associated Weights (Pollock)	~ 8 (Every)	~ 25 (Every)
Otolith Pairs (Pollock)	8 (Every)	25 (Every)
Lengths (Pacific Cod)	~ 10 (Every)	~ 30 (Every)
Otolith Pairs (Pacific Cod)	1 (Every)	5 (Every)
Pacific Halibut Condition	~ 10 Viability Assessments (Every)	Measure and Assess All Halibut



# Salmon Monitoring

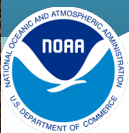


**NOAA**  
FISHERIES

*Thank You!*

**Any  
Questions?**

***[joel.kraski@noaa.gov](mailto:joel.kraski@noaa.gov)***



**NOAA  
FISHERIES**