

Integrated
Monitoring

Operationalizing Wireless EM

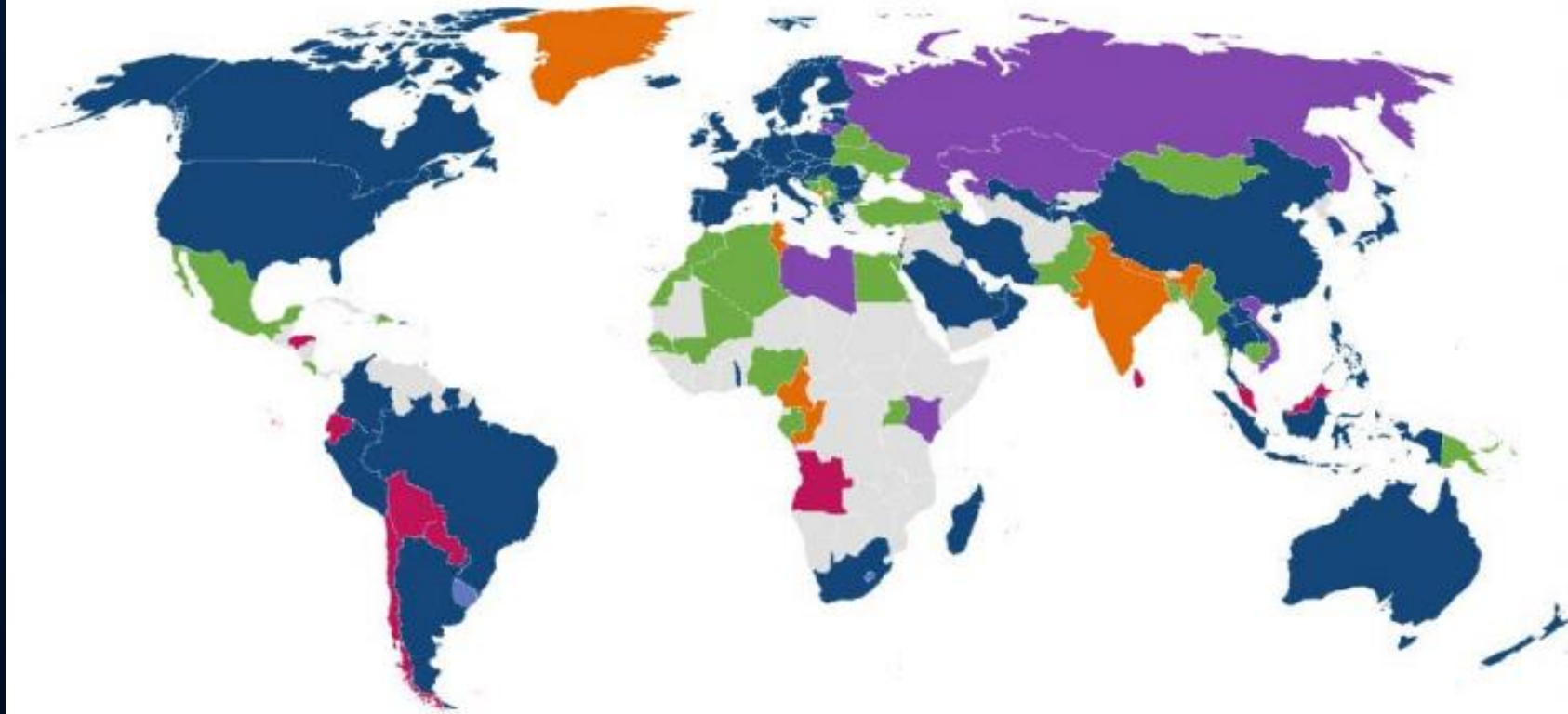
Wireless EM necessitates an
end-to-end solution:

Vessel ↔ Cloud ↔ Reviewer

Existing 4G Coverage +
Expanding 5G Coverage +
Broadband Satellite Coverage =

Cost Effective Global Wireless EM

verizon[✓]
partner program - member



- 5G deployed in network, services launched
- 5G deployed in network, soft launch
- 5G deployed in network, precommercial
- Deploying
- Planning
- Evaluating/testing/trialling

Operationalizing Wireless EM

Wireless EM necessitates an
end-to-end solution:

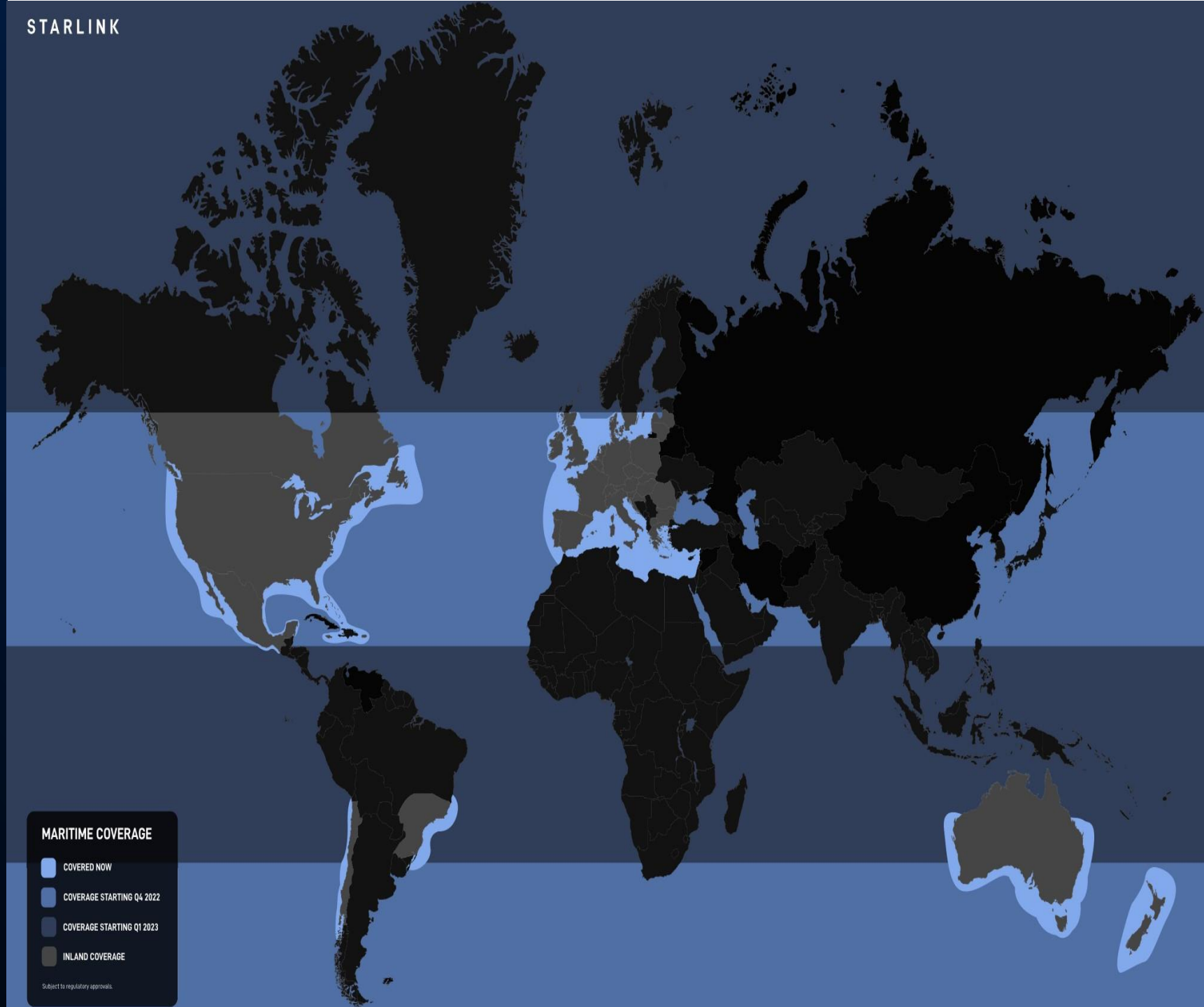
Vessel ↔ Cloud ↔ Reviewer

Existing 4G/5G Coverage +
Broadband Satellite Coverage =

Cost Effective Global Wireless EM



STARLINK



MARITIME COVERAGE

- COVERED NOW
- COVERAGE STARTING Q4 2022
- COVERAGE STARTING Q1 2023
- INLAND COVERAGE

Subject to regulatory approvals.

Beyond Gear Sensors and Box Models...

Wireless EM moves A.I.
box models from shore-side
to the vessel to minimize
data costs and reduce video
review time.



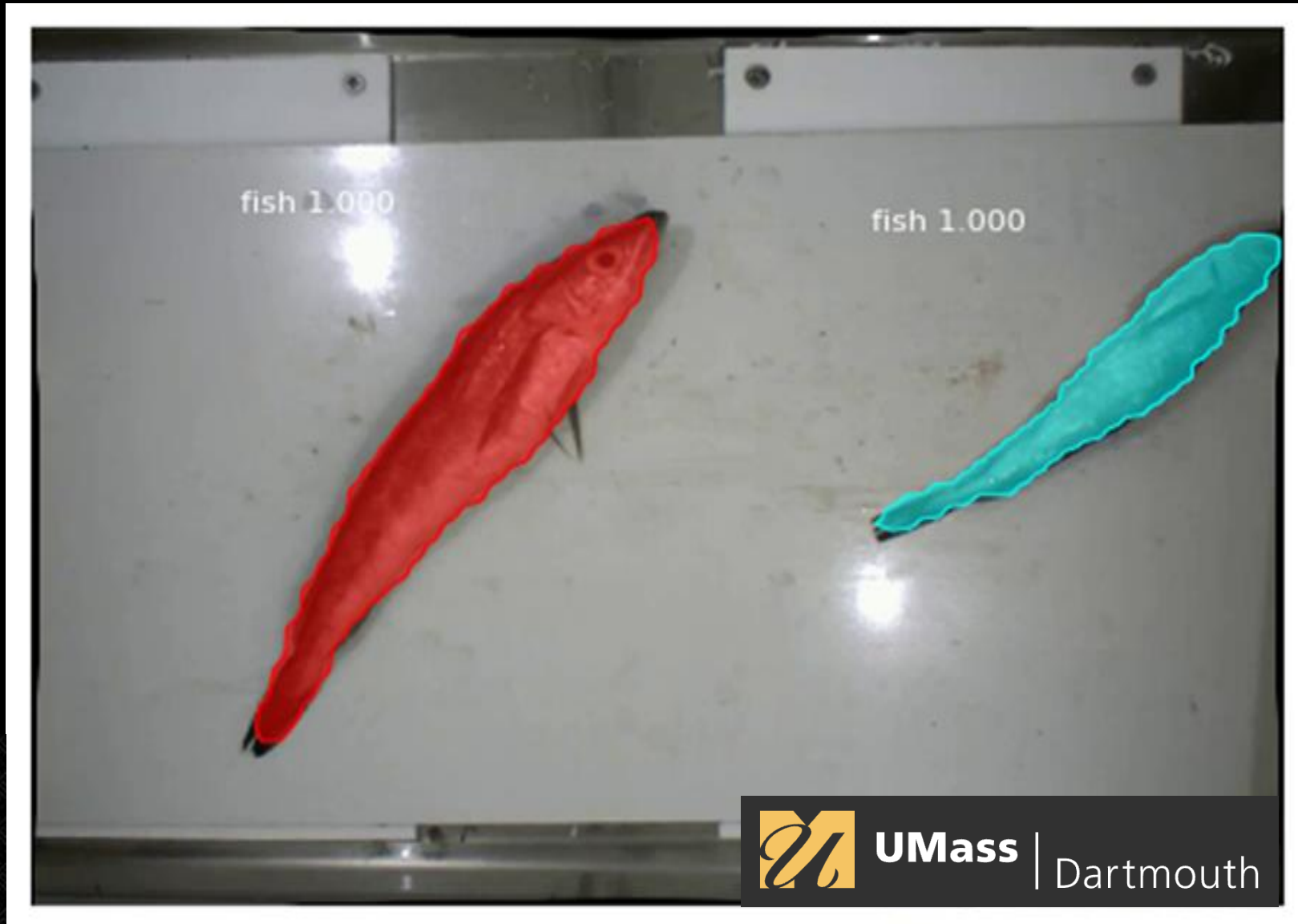
To Pose Detection

Fishing activity can be determined by **crew tracking & pose detection models**—providing health & safety benefits.



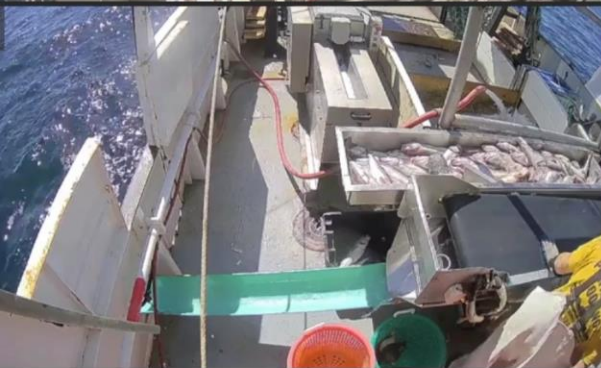
To Fish Identification

Wireless EM facilitates hybrid A.I. approaches—blending **edge AI detection** with complex **Mask R-CNN models** running in the cloud on special machine learning hardware.



UMass

| Dartmouth



Trip	Issues	Haul	D.Length	D.Tally	D.E:

D.Tally

- Count of Fish: 1
- Species: 914179 - FISH, NK
- Grade: 01 - Round
- Disposition: 099 - DISCARDED, OTHER
- Comments:
- Haul Offset: Prior

