



NOAA
FISHERIES

The Utility and Benefit of Standardized Vessel Monitoring Plans in Electronic Monitoring Programs

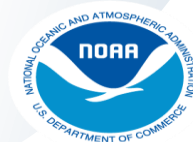
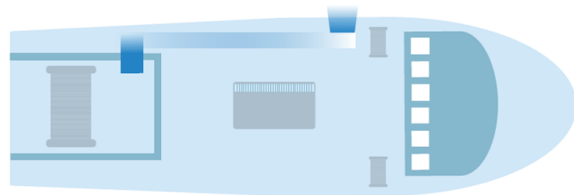
International Fisheries Observer and Monitoring Conference,
March 6-10, 2023

Nichole Rossi, Fishery Biologist and Electronic Monitoring Lead
NOAA Fisheries, National Marine Fisheries Service
Northeast Fisheries Science Center
Fisheries Monitoring and Research Division

Vessel Monitoring Plan (VMP)

The VMP describes in detail how an Electronic Monitoring (EM) system is specifically configured on a particular vessel, sampling requirements, and how fishing operations on a particular vessel will be conducted to effectively monitor fishing activities onboard. The VMP will clearly define the roles and responsibilities of all parties (fisher, EM vendor, regulatory organization) including provisions to which each party must adhere.

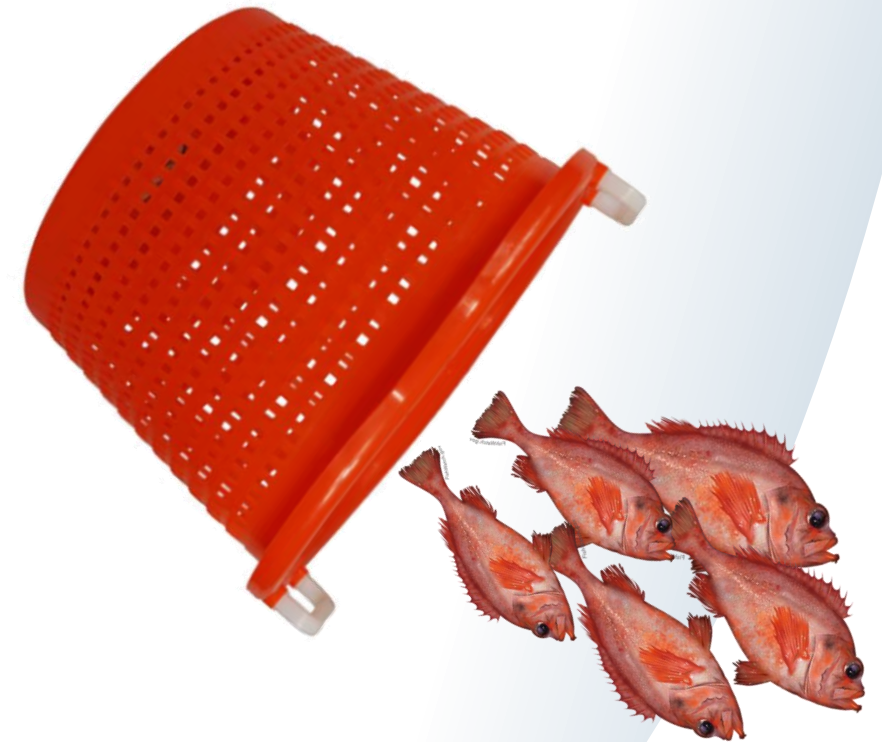
A vessel must adhere to EM program requirements and follow catch handling protocols as described in the VMP at all times on EM sector trips. Noncompliance with EM program requirements (e.g., catch handling inconsistent with the VMP) may affect a vessel's eligibility to participate in the EM program.



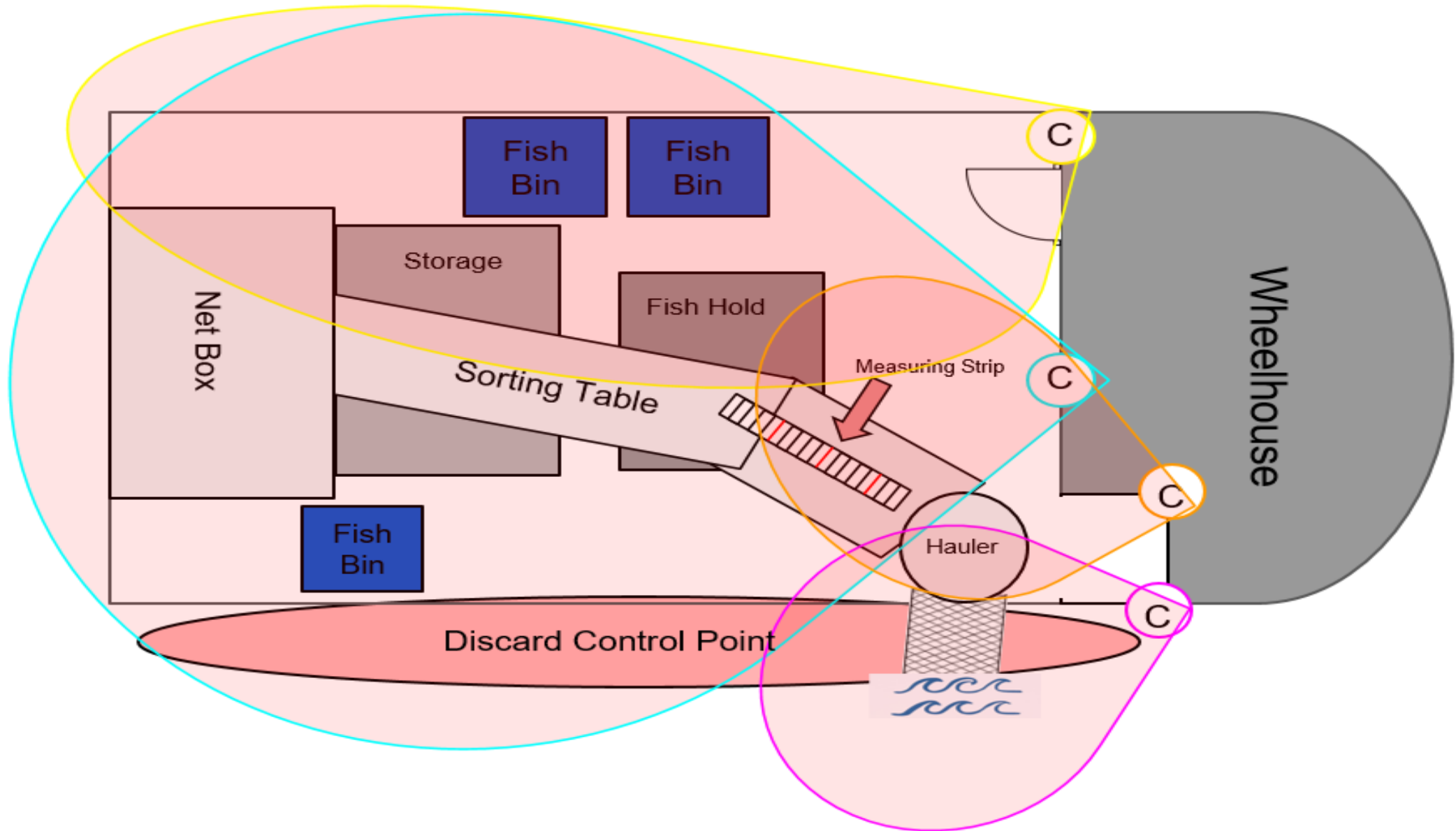
Vessel Monitoring Plan Requirements

A vessel must have an approved VMP to participate in EM for a given **gear type**. At a minimum; the VMP must incorporate basic EM Program Standards by reference in the following sections.

- General vessel information
- List of contacts (fisher, dealer, etc.)
- EM system components and specifications
- Vessel reporting requirements
- EM system malfunction protocols
- Troubleshooting reference
- System operations and maintenance
- Catch handling requirements
- Dockside monitoring requirements



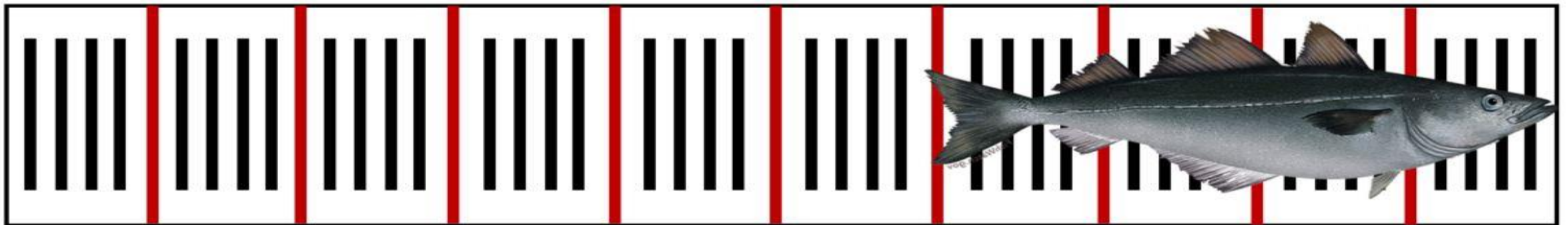
VMP Requirement: Vessel Diagram of Fishing Deck



VMP Requirement: Fisher Catch Handling & Camera Views

Describes **catch processing** by gear type. Information clearly outline and describe all catch handling procedures for the vessel operator and crew. Catch handling procedures describe the processing of allocated groundfish, prohibited, and non-allocated species.

Gillnet Camera Requirements	
CAM 1	Primary view of discard processing station (length measurements & subsampling procedures).
CAM 2	Hauler View.
CAM 3	Picking table (catch sorting & processing operations or secondary view of hauler) discard control point(s); storing areas for kept fish.
CAM 4	Alternate view of deck operations/discard control point(s).



EM Vessel Monitoring Plan (VMP) Document Management Application - VMAN

The VMAN management application was created for the purpose of structuring operations central to VMP approvals and management of EM programs.

VMAN Functionality:

- Monitors VMP submissions (initial, revised) & approval
- Snapshots of vessel diagram, camera views, etc.
- Documents & tracks vessel equipment issues
- Documents history, dialogue, revisions. etc.
- Primary source for shared access, file storage, archiving
- Notification and communication tool



EM Vessel Monitoring Plan Document Management Application



VMAN USER GUIDE

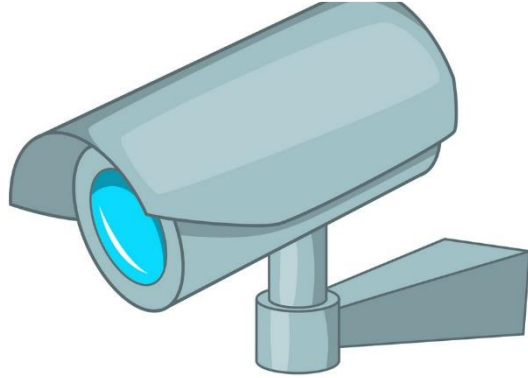
U.S. Department of Commerce
NOAA Fisheries Service
National Marine Fisheries Service
Fisheries Monitoring and Research Division
Data and Information Systems
166 Water Street
Woods Hole, MA 02543



NOAA
FISHERIES

EM Program Standards

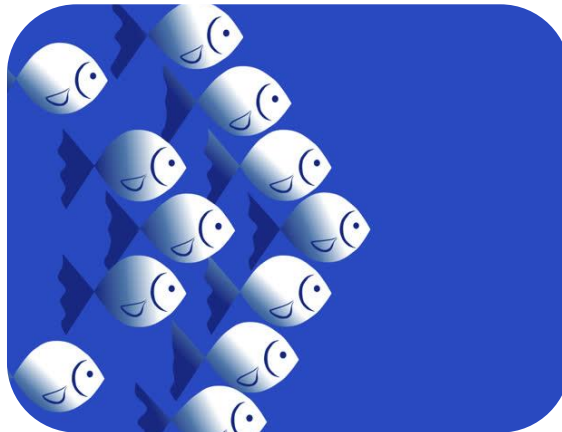
Electronic
Monitoring
Requirements



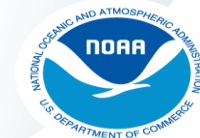
Vessel Operator
Requirements



Vessel Monitoring
Plan (VMP)
Requirements

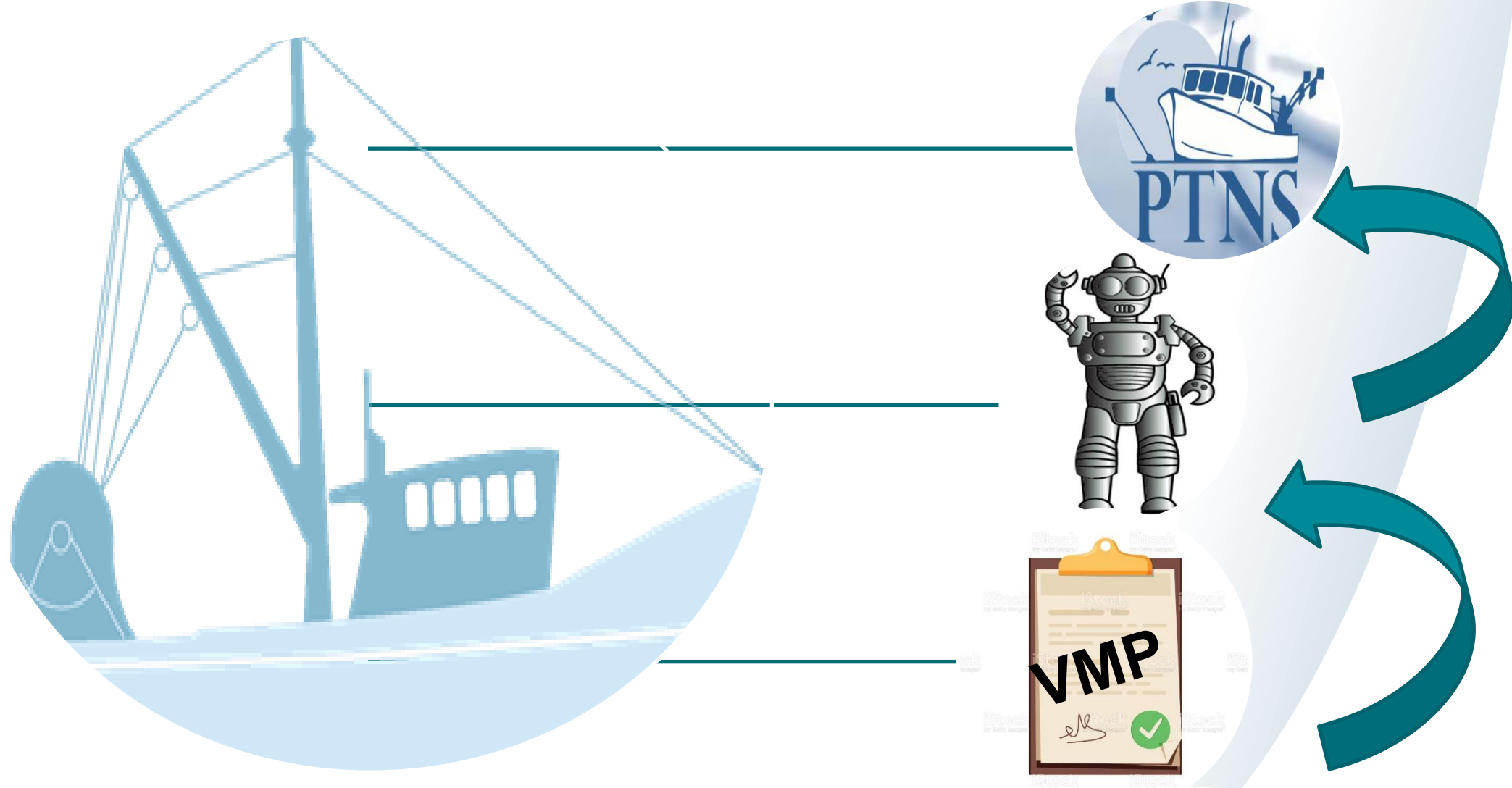


Data
Collection
Requirements



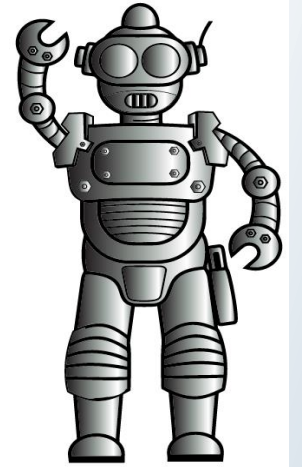
NOAA
FISHERIES

VMP Connection with EM Program Requirements



Acknowledgements

- Thomas Liebert – VMAN programmer and developer
- Holly McBride, Darryl Gifford – IT support
- Nathalie Staiger-Gutierrez – Electronic Monitoring reviewer and illustrator
- Corrine Endres, Diana Glinos, Stephanie Weiss – Electronic Monitoring support team



VMAN



**NOAA
FISHERIES**